



Shri Yashwantrao Bhonsale Education Society's



# Yashwantrao Bhonsale College of Pharmacy

A/P: Charathe (Vazarwadi), Tal: Sawantwadi, Dist: Sindhudurg – 416 510 (M. S.)

**A REPORT ON**

**“PATHOLOGICAL LAB VISIT”**

**2019**

---

Yashwantrao Bhonsale College of Pharmacy, Sawantwadi – 416 510, Maharashtra  
State

---

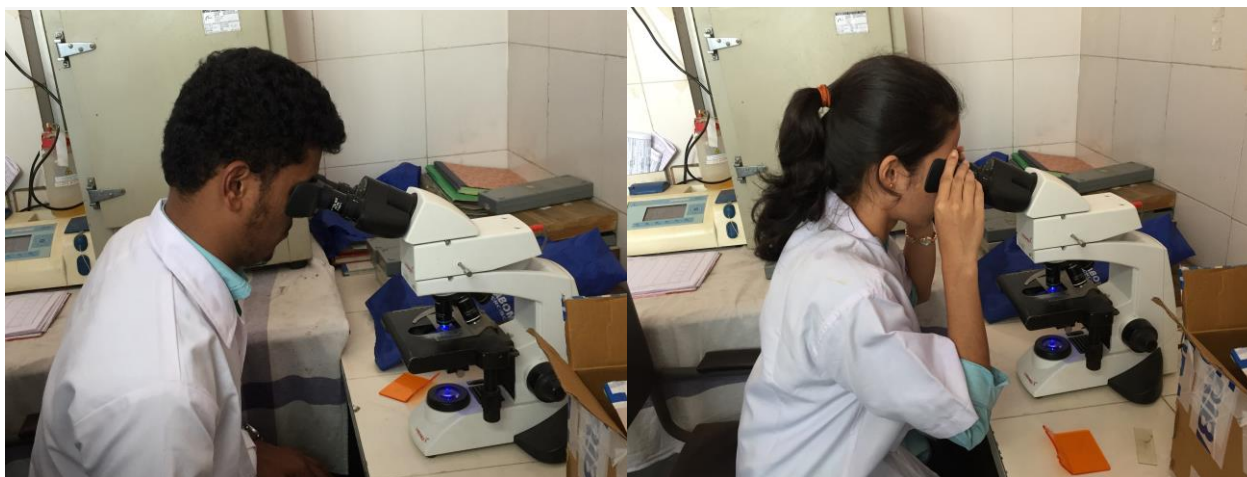
Yashwantrao Bhonsale College of pharmacy, S. Y. B. Pharmacy Division: A students were visited “**Pathological lab of Cottage hospital**” situated at Sawantwadi on 20<sup>th</sup> March 2019. The prior permission for visit was obtained from Dr. U. B. Patil sir. Total 52 students were visited under the guidance of Ms. Shweta Shirodkar Assistant Prof. Dept of Pharmaceutics.

The main objective of this visit was to provide students an insight of the practical applications of what they are learning in theory and an opportunity to learn practically through interaction and working methods. The visit was made with the purpose to explore the students with the different diagnostic tools used in pathological testing.

All students were gathered at college on 20<sup>th</sup> March 2019 at 2:00 pm. After taking attendance, S.Y. B.Pharmacy, Division: A students along with accompanying teacher left the campus at 02:15 pm by college buses .The destination place was reached at 02:30 pm.

Students were divided in batches of 15 for convenience to visit the pathological lab. Different basic branches of Pathology were explored to students. Also different diagnostic tools and diagnostic reagents like autoanalyzer, centrifuge machine, ESR machine, cell counter, micropipette & pathological microscope were well explored to students along with demonstration. Pathological crosschecking parameters with respect to different pathological conditions were briefed to the students. Importance of different disinfection procedures with examples during every stage of pathological screening was elaborated to the students. Students have been introduced with the different queries regarding diagnostic techniques.

It was an informative and interactive forum for exchange of new knowledge.







---

**Yashwantrao Bhonsale College of Pharmacy, Sawantwadi – 416 510, Maharashtra State**

---



The visit was concluded by thanking all Pathological lab technicians for their cooperation and thorough explanation.